



8 MOUNTAIN AVENUE  
MAPLEWOOD | NEW JERSEY

[www.8MOUNTAINAVENUE.COM](http://www.8MOUNTAINAVENUE.COM)



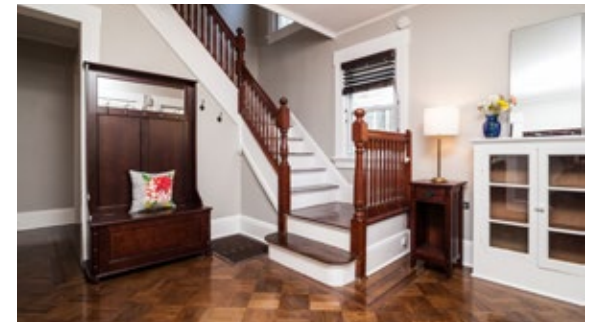
***Benjamin H Garrison***

SALES ASSOCIATE

973-913-1011

917-940-3158

[Ben.Garrison@CBMoves.com](mailto:Ben.Garrison@CBMoves.com)



This sun-filled colonial offers the best in modern living while maintaining original period details. Ideally situated just a short walk to charming Maplewood Village, parks, schools and NYC transportation, this beautiful home enjoys a serene setting on a quiet tree lined street. Featuring a covered porch, rear deck, central air, large Andersen windows, parquet wood floors, high ceilings, abundant natural light and multiple entertaining rooms - this Maplewood home is a must see.

A spacious foyer ushers guests in past the freshly painted covered front porch to the main level. The living room offers a comfortable space to relax and enjoy good conversation. A fireplace in the adjacent dining room gives dinners a special antiquated charm as everyone savors your home-cooked meals. The eat-in kitchen is equipped with a skylight and stainless steel appliances to cook whatever visitors desire. The open flow lets you easily serve food in the dining room while providing access to the rear deck and renovated powder room.

## PERFECT FOR ENTERTAINING



# ROOMS TO RELAX PLACES TO PLAY

Three comfortable bedrooms on the second floor form the cozy sleeping quarters. The master bedroom enjoys a large closet, while a hall walk-in closet offers plenty of additional storage space and a full bath easily serves everyone during the morning rush. The third level features a fourth bedroom and full bath, perfect for an extra play space, office or guest/nanny suite. In addition there is ample storage space and a bonus room. On the lower level are storage space, a laundry room, and utilities access.

Outside finds a level lot that is perfect for running and playing. The back deck has room for a grill and makes a prime spot for warm weather gatherings. With golf course views and a perimeter fence there is plenty of room to enjoy your yard in peace.



# HIGHLIGHTS

## Updates

Freshly painted covered front porch (2016)

Freshly painted first floor, stairwell to second floor, and front porch (2016)

Second floor bedroom repainted in 2014, new light fixture installed and closet shelves added

Renovated second floor bathroom with large linen closet, Kohler sink, toilet and tub

Updated first floor powder room – sink, fixtures, mirror, and light replaced, bathroom repainted in 2013

Third floor bathroom updated and painted in 2016

First level floors re-stained and polished in 2011

New light fixtures throughout home – added in 2014

Renovated eat-in kitchen

## Additional Features

Oversized walk-in closet and dressing room on second level

Large closet in master bedroom

Vintage porcelain claw tub in third floor bath

Wood-burning fireplace

Covered front porch and rear deck

Level yard with golf course views

Large first floor half-bath

Large Andersen windows

Drapes, window treatments

Sump pump

Parquet, wood flooring

Forced hot air

Central air

Walkout basement

## Property Particulars

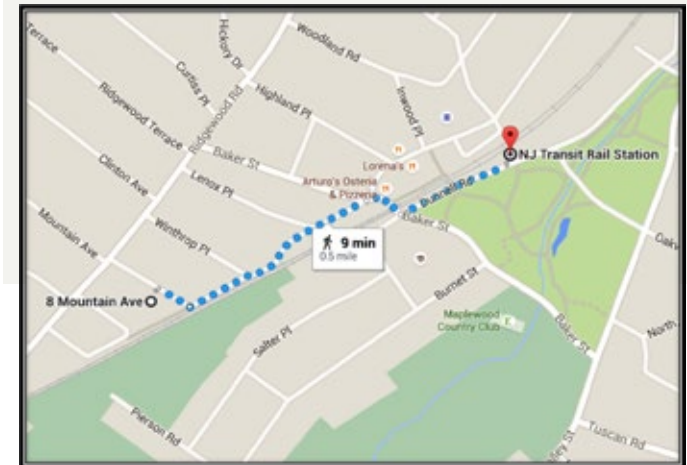
Colonial Home

8 Rooms; 4 Bedrooms; 2 Full Baths; 1 Powder Room

Lot Size: 50 x 128



## Walk to Train



# 8 MOUNTAIN AVENUE

MAPLEWOOD | NEW JERSEY

[www.8MountainAvenue.com](http://www.8MountainAvenue.com)

